

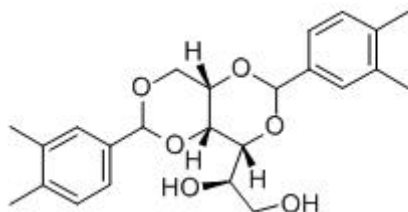
■ POLYMER ADDITIVES

JADEWIN AN 3988

NUCLEATING AGENT

CHEMICAL COMPONENT

COMPONENT	1,3:2,4-Bis(3,4-dimethylbenzylideno) sorbitol
CAS	135861-56-2
Molecular	C ₂₄ H ₃₀ O ₆
M.W	414.5



SPECIFICATION AND PHYSICAL PROPERTIES

TEST	UNIT	SPECIFICATION
APPEARANCE		WHITE POWDER
MELTING POINT	°C	250.0-265.0
VOLATILES	%	0.50MAX
97% OF THE SIZE	μ m	30MIN
AVERAGE PARTICLE SIZE	μ m	15MIN

FEATURE AND APPLICATION

* JADEWIN 3988 is new sorbitol based clarifying agent for polyolefins. Designed to address the limitations of previous generation clarifying agents with respect to transparency, organoleptics, processability and nucleation capability.

*JADEWIN 3988 offers superior aesthetics properties and easy processing characteristics.

*JADEWIN 3988 Suitable for food contact or odor sensitive applications

Application:

- Injection molding - thermoplastics
- Extrusion



Advantages:

- JADEWIN 3988 can get highest clarity, glossiness and surface smoothness.so it is particularly suitable for transparent products.
- PP with clarifying agent/nucleating agent JADEWIN 3988 gives higher productivity.
- PP clarified with clarifying agent/nucleating agent JADEWIN 3988 offers an excellent combination of properties-toughness, flexibility, rigidity, moisture barrier, chemical resistance, heat resistance, and suitability for food contact. higher stiffness and heat distortion temperature.
- clarifying agent/nucleating agent JADEWIN 3988 in PP doesn't affect the taste of contained foods or liquid,so it is a better choice for food application compared to other conventional clarifying agent or nucleating agents.

PACKING

10 KG CARTON, 20KG CARTON

STORAGE

Keep container tightly closed and dry and storage in cool place

CHEMICAL INVENTORIES

Australia - AICS
Canada - DSL
EU - EINECS
China - IECSC
Japan - ENCS
New Zealand - NZIoC
Korea - ECL
USA - TSCA
Philippines - PICCS