

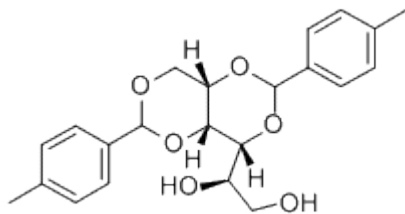
■ POLYMER ADDITIVES

JADEWIN AN 3940

NUCLEATING AGENT

CHEMICAL COMPONENT

COMPONENT	1,3:2,4-Di-p-methylbenzylidene sorbitol
CAS	54686-97-4
Molecular	C ₂₂ H ₂₆ O ₆
M.W	386



SPECIFICATION AND PHYSICAL PROPERTIES

TEST	UNIT	SPECIFICATION
APPEARANCE		WHITE POWDER
MELTING POINT	°C	230.00-245.00
VOLATILES	%	0.50MAX
PARTICLE SIZE	MESH	325MIN
ASSAY	%	98MIN

FEATURE AND APPLICATION

- * JADEWIN 3940 is nucleating agent for polyolefins, particularly for polypropylene(PP), linear low density polyethylene(LLDPE), some high density polyethylene(HDPE)
- * JADEWIN 3940 is suitable for injection molding, blow molding, film or sheet extrusion process
- * JADEWIN 3940 can be added directly to polyolefins powder also can be produced as 2.5~5% masterbatch

Advantages:

- Increase clarity and lower haze in polyolefins
- Improve gloss and surface smoothness
- Faster molding cycles



JADEWIN

杰得盈

**QINGDAO JADE NEW MATERIAL
TECHNOLOGY CO.,LTD**

青岛杰得佳新材料科技有限公司

- Increase flexural modulus and tensile strength
- Increase heat distortion temperature
- Non-toxic,FDA approved for use in food contact applications as its regulation
- Less dimensional variances in molded parts.
- Disperse completely and evenly in plastics as it is organic in nature and melt well during normal process

PACKING

10KG CARTON, 20KG CARTON

STORAGE

Keep container tightly closed and dry and storage in cool place

CHEMICAL INVENTORIES

Australia - AICS
Canada - DSL
EU - EINECS
China - IECSC
Japan - ENCS
New Zealand - NZIoC
Korea - ECL
USA - TSCA
Philippines - PICCS