

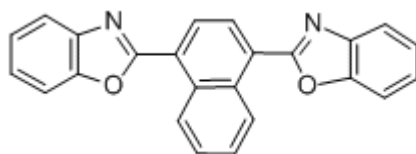
## ■ POLYMER ADDITIVES

### JADEWIN KCB

### OPTICAL BRIGHTENER

#### CHEMICAL COMPONENT

COMPONENT	2,2'- (naphthalene-1,4-diyl)bis (benzoxazole)
CAS	5089-22-5
Molecular	C <sub>24</sub> H <sub>14</sub> N <sub>2</sub> O <sub>2</sub>
M.W	362



#### SPECIFICATION AND PHYSICAL PROPERTIES

TEST	UNIT	SPECIFICATION
APPEARANCE		YELLOW-GREEN POWDER
MELTING POINT	°C	210.0-212.0
ASSAY	%	99.00MIN
VOLATILES	%	0.50MAX
COLOR SHADE		BLUE
FINENESS	MESH	100MIN

#### FEATURE AND APPLICATION

- \* JADEWIN KCB acts as an optical brightener
- \* JADEWIN KCB functions by absorbing invisible ultraviolet radiation and re-emitting it as visible light in the blue range of the spectrum.
- \* JADEWIN KCB is insoluble in water but soluble in ordinary organic solvents. Used to mask the yellowish cast sometimes observed in plastics and fibers after high temperature processing operations.
- \* JADEWIN KCB can be used in
  - Fibers/ Textiles/ Carpets



- Visual aspect &aesthetics
- Masking, where odor is suppressed
- \* For additional information please consult the Material Safety Data Sheet.

## PACKING

25KG Fiber Drum

## STORAGE

Keep container tightly closed and dry and storage in cool place

## CHEMICAL INVENTORIES

Australia - AICS  
Canada - DSL  
EU - EINECS  
China - IECSC  
Japan - ENCS  
New Zealand - NZIoC  
Korea - ECL  
USA - TSCA  
Philippines - PICCS