

■ POLYMER ADDITIVES

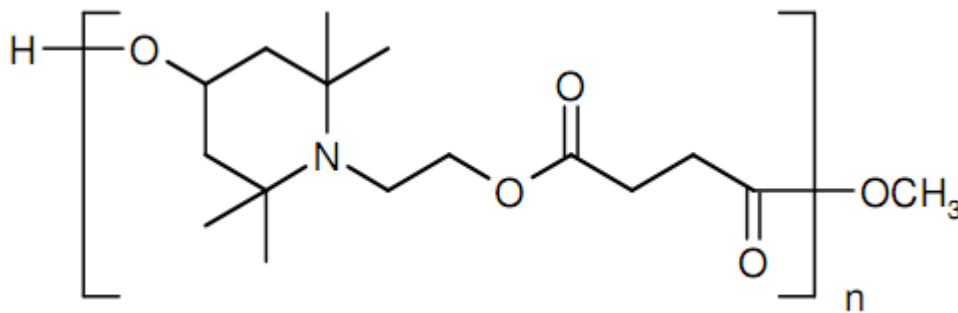
JADEWIN LS 622

CHEMICAL COMPONENT

COMPONENT Poly(4-hydroxy-2,2,6,6-tetramethyl-1-piperidine ethanol-alt-1,4-butanedioic acid)

CAS 65447-77-0

Molecular (C₁₅H₂₅NO₄)_n



SPECIFICATION AND PHYSICAL PROPERTIES

TEST	UNIT	SPECIFICATION
APPEARANCE		WHITE GRANULAR
MELTING RANGE	°C	50.00-70.00
VOLATILES	%	0.50MAX
ASH	%	0.10MAX
CLARITY		CLEAR
TRANSMITTANCE		
450nm	%	95.00MIN
500nm	%	97.00MIN

FEATURE AND APPLICATION

- Non-discoloring
- Low volatility and excellent resistance to migration
- Low basicity for reduced interactions with pigment and other stabilizers
- Extensive food contact clearances
- JADEWIN LS 622 is a polymeric hindered amine light stabilizer(HALS)which is effective in a broad range of polymers and applications. The product is particularly usefully in PE applications((injection molding, rotational molding, film, and tape),EVA,PP fibers,Polyurethanes,polyacetals,elastomers, adhesives,and sealans
- It is also an excellent light stabilizer for systems containing carbon black.



PACKING

25Kg Carton Box, 500Kg Bag.

STORAGE

Keep container tightly closed and dry and storage in cool place

CHEMICAL INVENTORIES

Australia - AICS
Canada - DSL
China - IECSC
Japan - ENCS
New Zealand - NZIoC
Korea - ECL
USA - TSCA
Philippines - PICCS