

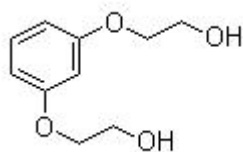
■ POLYMER ADDITIVES

JADEWIN HER

CHAIN EXTENDER

CHEMICAL COMPONENT

COMPONENT	1,3-Bis(2-hydroxyethoxy)benzene
CAS	102-40-9
Molecular	C10H14O4
M.W	198.2



SPECIFICATION AND PHYSICAL PROPERTIES

TEST	UNIT	SPECIFICATION
APPEARANCE		WHITE POWDER
HYDROXYL VALUE	MgKOH/g	535.00-580.00
WATER	%	0.20MAX
ASSAY	%	98.0MIN
MELTING POINT	°C	83.0MIN

FEATURE AND APPLICATION

*JADEWIN HER is an aromatic diol chain extender. It can improve tensile, hardness, resilience properties to MDI-polyurethane elastomers.

*JADEWIN HER has been approved that it can maintain maximum endurance, elasticity and plasticity of PU elastomer. It also offers minimum shrinkage. Besides of those common advantages of aromatic family chain extenders.

*JADEWIN HER avoids the deficiencies in HQEE (HQEE returns solids quickly when temperature drops a little). And JADEWIN HER offers better tear strength, initial strength, compression set. It has advantages of low shrinkage, cut resistance, low melting point and easy handling etc.

*Typical uses of HER include seal, mud pipeline lining, skating wheel, shoe part, beverage container, spandex and soft or rigid packaging materials etc



Solubility at 25°C, wt. %

Acetone:11

Ethanol:13

Ethyl Acetate:3

Ethane:<1

Dimethylacetamide (DMAC): >1

PACKING

25KG DRUM

STORAGE

JADEWIN HER aromatic diol is hygroscopic and consideration should be taken to store the product in a tightly closed container in a cool dry place.

JADEWIN HQEE aromatic diol is also sensitive to light (UV) and will turn yellow-brown in the presence of light.