

■ POLYMER ADDITIVES

JADEWIN MCDEA

CHAIN EXTENDER

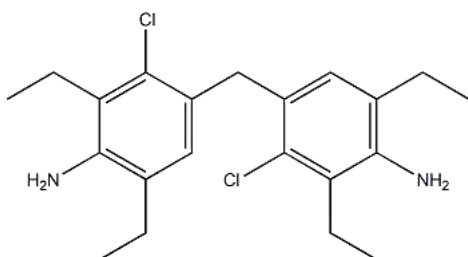
CHEMICAL COMPONENT

COMPONENT Bis(4-amino-2-chloro-3,5-diethylphenyl)methane

CAS 106246-33-7

Molecular C₂₁H₃₀Cl₂N₂

M.W 379.38



SPECIFICATION AND PHYSICAL PROPERTIES

TEST	UNIT	SPECIFICATION
APPEARANCE		OFF-WHITE GRANULAR
PURITY (HPLC)	%	98.00MIN
MELTING POINT	°C	87.00-90.00
WATER (KF)	%	0.10MAX
COLOR SHADE		4.00MAX

FEATURE AND APPLICATION

*JADEWIN and TDI prepolymer have good compatibility and compatibility. The PU products have excellent physical and dynamic mechanical properties, which can be used in Pu casting, spraying, rim and other technological methods; in PU elastomer, microporous products, adhesives, coating agents and other products.

APPLICATION:

This product can be used in PU elastomer, microporous products, adhesives, coating agents and other products.



JADEWIN

杰得盈

**QINGDAO JADE NEW MATERIAL
TECHNOLOGY CO.,LTD**

青岛杰得佳新材料科技有限公司

PACKING

25KG DRUM

STORAGE

Keep container tightly closed and dry and storage in cool place.