

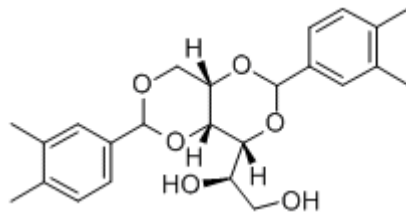
■ POLYMER ADDITIVES

JADEWIN -3

NUCLEATING AGENT

CHEMICAL COMPONENT

COMPONENT	1,3:2,4-Bis(3,4-dimethylbenzylideno) sorbitol
CAS	135861-56-2
Molecular	C ₂₄ H ₃₀ O ₆
M.W	414.5



SPECIFICATION AND PHYSICAL PROPERTIES

TEST	UNIT	SPECIFICATION
APPEARANCE		WHITE POWDER
MELTING POINT	°C	250.0-265.0
VOLATILES	%	0.50MAX
D97 OF THE SIZE	μ m	30MIN
D97 AVERAGE PARTICLE SIZE	μ m	15MAX

FEATURE AND APPLICATION

- * JADEWIN-3 is new sorbitol based clarifying agent for polyolefins. Designed to address the limitations of previous generation clarifying agents with respect to transparency, organoleptics, processability and nucleation capability.
- * JADEWIN-3 offers superior aesthetics properties and easy processing characteristics.
- * JADEWIN-3 Suitable for food contact or odor sensitive applications

Application:

- Injection molding - thermoplastics
- Extrusion



Advantages:

- JADEWIN-3 can get highest clarity, glossiness and surface smoothness.so it is particularly suitable for transparent products.
- PP with clarifying agent/nucleating agent JADEWIN-3 gives higher productivity.
- PP clarified with clarifying agent/nucleating agent JADEWIN-3 offers an excellent combination of properties-toughness, flexibility, rigidity, moisture barrier, chemical resistance, heat resistance, and suitability for food contact. higher stiffness and heat distortion temperature.
- clarifying agent/nucleating agent JADEWIN-3 in PP doesn't affect the taste of contained foods or liquid,so it is a better choice for food application compared to other conventional clarifying agent or nucleating agents.

PACKING

10 KG CARTON, 20KG CARTON

STORAGE

Keep container tightly closed and dry and storage in cool place

CHEMICAL INVENTORIES

Australia - AICS
Canada - DSL
EU - EINECS
China - IECSC
Japan - ENCS
New Zealand - NZIoC
Korea - ECL
USA - TSCA
Philippines - PICCS